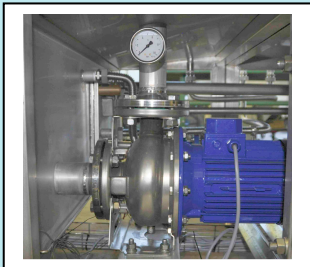
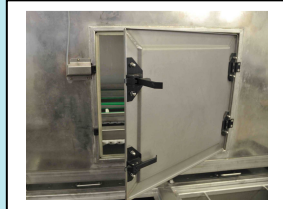
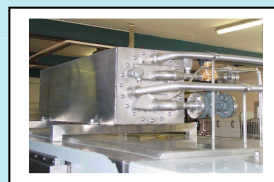


## Traywasher TWB 601-2-BB2



### Technical specifications:

- Capacity: 600 trays/hour (600x400x200)
- Mainwash and afterrinse
- Pump: Mainwash 15 kW, 1000 l/min, 5 bar  
Pump in stainless steel
- Tank: Mainwash 800 litre
- Relay operated switchboard
- heat insulation cabin
- noise max. 85 d(B)A
- variable chain speed
- manhole in tank
- pump in stainless steel
- centralizes drain



### As Options:

- Blowing section
- Drumfilter
- Recirculated afterrinse
- Detergent dispenser
- Mechanical Exhaust
- Heating of wash water and afterrinse water