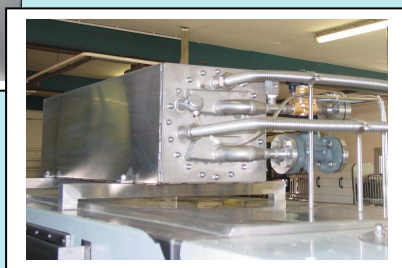
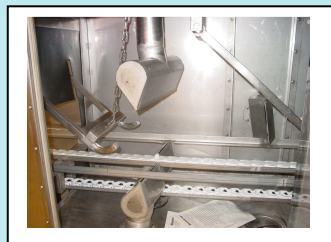
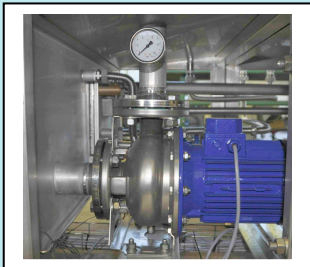
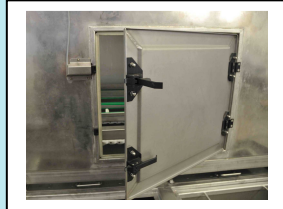


Traywasher TWB 1002-2-BB3



Technical specifications:

- Capacity: 1000 trays/hour
- Prewash, mainwash and afterrinse
- Pumps: prewash 7,5 kW, 1000 l/min, 3 bar
Mainwash 11 kW, 900 l/min, 5 bar
All Pumps in stainless steel
- Tanks: prewash 1200 litre
Mainwash 1000 litre
- Simens S7 PLC-control unit
- heat insulation cabin
- noise max. 85 d(B)A
- heated Prewash
- heated afterrinse
- pumps in stainless steel
- variable chain speed
- indirect heating by heat exchanger
- manhole in tanks
- centralized drain
- Blowing section

As Options:

- Drumfilter
- Recirculated afterrinse
- Detergent dispenser
- Mechanical Exhaust
- Condenser for Exhausted air