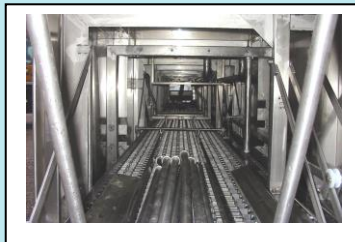
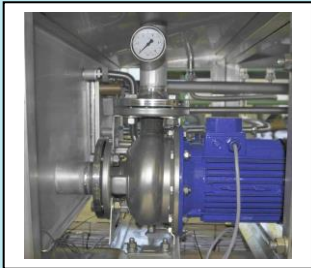


## Traywasher TWD 1002-2-BD4



### Technical specifications:

- Capacity: 500 trays/h pr. Line, total 1000 trays/h
- Prewash, mainwash and afterrinse
- Pumps: prewash 2x4 kW, each 1000 l/min, 2 bar  
Mainwash 2x7,5 kW, each 1000 l/min, 3 bar  
All Pumps in stainless steel
- Tanks: prewash 1500 litre  
Mainwash 1500 litre
- Simens S7-1200 PLC-control unit
- heat insulation cabin
- noise max. 85 d(B)A (Option 82 d(B)A)
- heated Prewash
- heated afterrinse
- pumps in stainless steel
- variable chain speed, individual each line
- indirect heating by heat exchanger
- manhole in tanks
- centralized drain
- Blowing section (Option)

### As Options:

- Drumfilter
- Recirculated afterrinse
- Detergent dispenser
- Mechanical Exhaust
- Condenser for Exhausted air