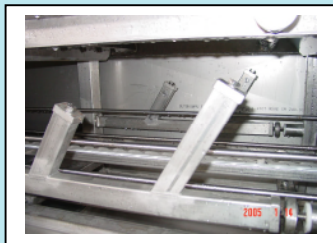
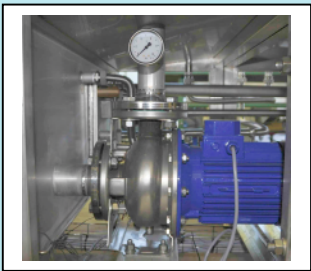


Traywasher TWBD 2001-2



Technical specifications:

- Capacity: 2000 trays/hour
- Mainwash and afterrinse
- Pumps: Mainwash 2 x 15 kW, 1000 l/min, 5 bar
- Tank: Mainwash 2000 litre
- Simens LOGO PLC-control unit
- heat insulation cabin
- noise max. 85 d(B)A
- pumps in stainless steel
- variable chain speed
- manhole in tank
- centralized drain

As Options:

- Blowing Section
- Drumfilter
- Recirculated afterrinse
- Heated afterrinse
- Detergent dispenser
- Mechanical Exhaust
- Condenser for Exhausted air