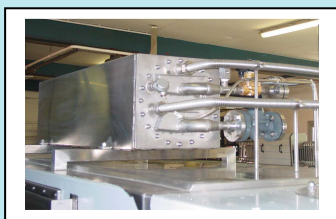


Traywasher TWS 402-2-BS1



Technical specifications:

- Capacity: up to 400 trays/hour in 1 line
- Inlet zone: 1000 mm
- Prewash zone: 1800 mm
- Prewash pump: 4 kW, 1000 l/min, 2 bar
- Mainwash zone: 1800 mm
- Mainwash pump: 7,5 kW, 1000l/min, 3 bar
- All pumps: stainless steel
- Prewash tank: 600 litre
- Mainwash tank: 600 litre
- Watertemp. Prewash: 25°C
- Watertemp. mainwash: 55°C
- Watertemp. afterrinse: up to 85°C
- Blowing section: 2300 mm
- Outlet zone: 500 mm
- Blowing with 1 x 5,5 kW ventilator
- Ventilator is frequency controled
- Relay Control
- Variable chainspeed (Lenze)
- Machine Size: 7900x1550x2000 mm

Options:

- Drum Filter
- Siemens S7 PLC-control
- Recirculated Afterrinse
- Mechanical exhaust
- Detergent dispenser