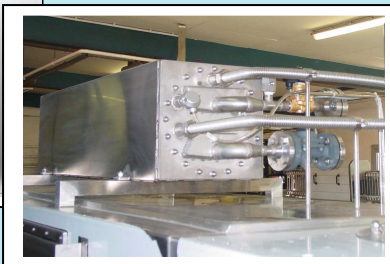


## Traywasher TWS 1203-3-BS4



### Included as standard:

- heat insulation
- noise max. 85 d(B)A
- heated Prewash
- heated afterrinse
- pumps in stainless steel
- Siemens S7 PLC-control (from TWS602-2)
- variable chain speed
- indirect heating by heat exchanger
- manhole in tanks
- centralized drain

### As Options:

- Blowing section
- Drumfilter
- Recirculated afterrinse
- Detergent dispenser
- Mechanical Exhaust
- Condenser for Exhausted air