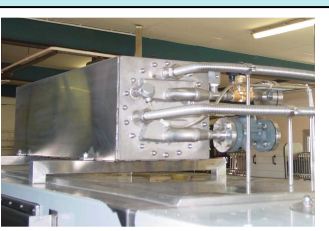
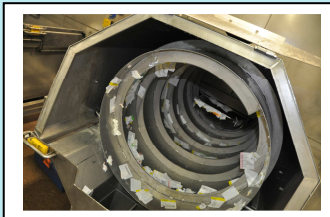


Traywasher TWD 2503-3-BD7



Technical specifications:

- Capacity: up to 2500 trays/hour in 2 lines
- Inlet zone: 1000 mm
- Prewash zone: 3600 mm with drumfilter
- Prewash pumps: 2x 4 kW, 1000 l/min, 2 bar
- Mainwash zone: 2700 mm with drumfilter
- Mainwash pumps: 2x11kW, 900 l/min, 5 bar
- Recirculated afterrinse: 1800 mm with drumfilter
- Afterrinse pump: 11,0 kW, 600l/min, 7 bar
- All pumps: stainless steel
- Prewash tank: 2000 litre
- Mainwash tank: 2000 litre
- Afterrinse tank: 1000 litre
- Watertemp. Prewash: 40°C
- Watertemp. mainwash: 55°C
- Watertemp. Afterrinse 1: up to 65°C
- Watertemp. Afterrinse 2: up to 85°C
- Blowing section: 3600 mm
- Outlet zone: 500 mm
- Siemens S7 PLC-control
- Blowing with 7 x 5 kW ventilators
- Ventilators are frequency controled
- Moisture left: max 10 g/tray
- Bacterias left: max 50 cfu/cm²
- Noise: max 85 dBA
- Machine Size: 13700x3000x2550 mm