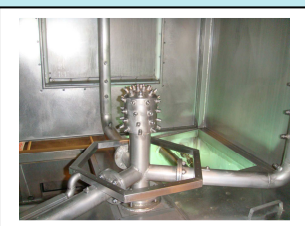
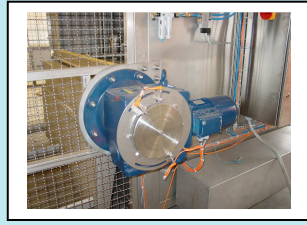
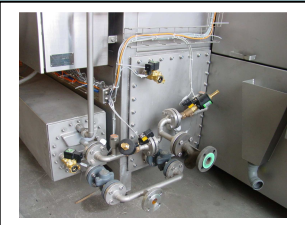
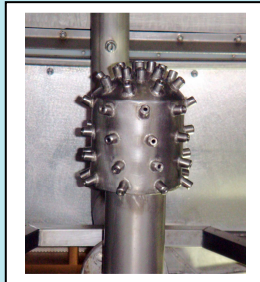


Containerwasher CWS 30-1



Technical specifications:

- Washingmachine for 200 litre containers (Vemag)
- Capacity: 30 containers /hour
- mainwash and afterrinse
- Pump: mainwash 15 kW, 1500 l/min, 4 bar in stainless steel
- Tank: 1000 litre
- PLC-control, Siemens S7, ProFace Touchscreen
- Spezial designed nozzles
- noise max. 85 d(B)A
- direct steam heating or electrical
- manhole in tanks
- centralized drain

Options:

- heated afterrinse, indirect steamheating or electrical
- drumfilter
- heat insulation
- indirect heating by steam heat exchanger